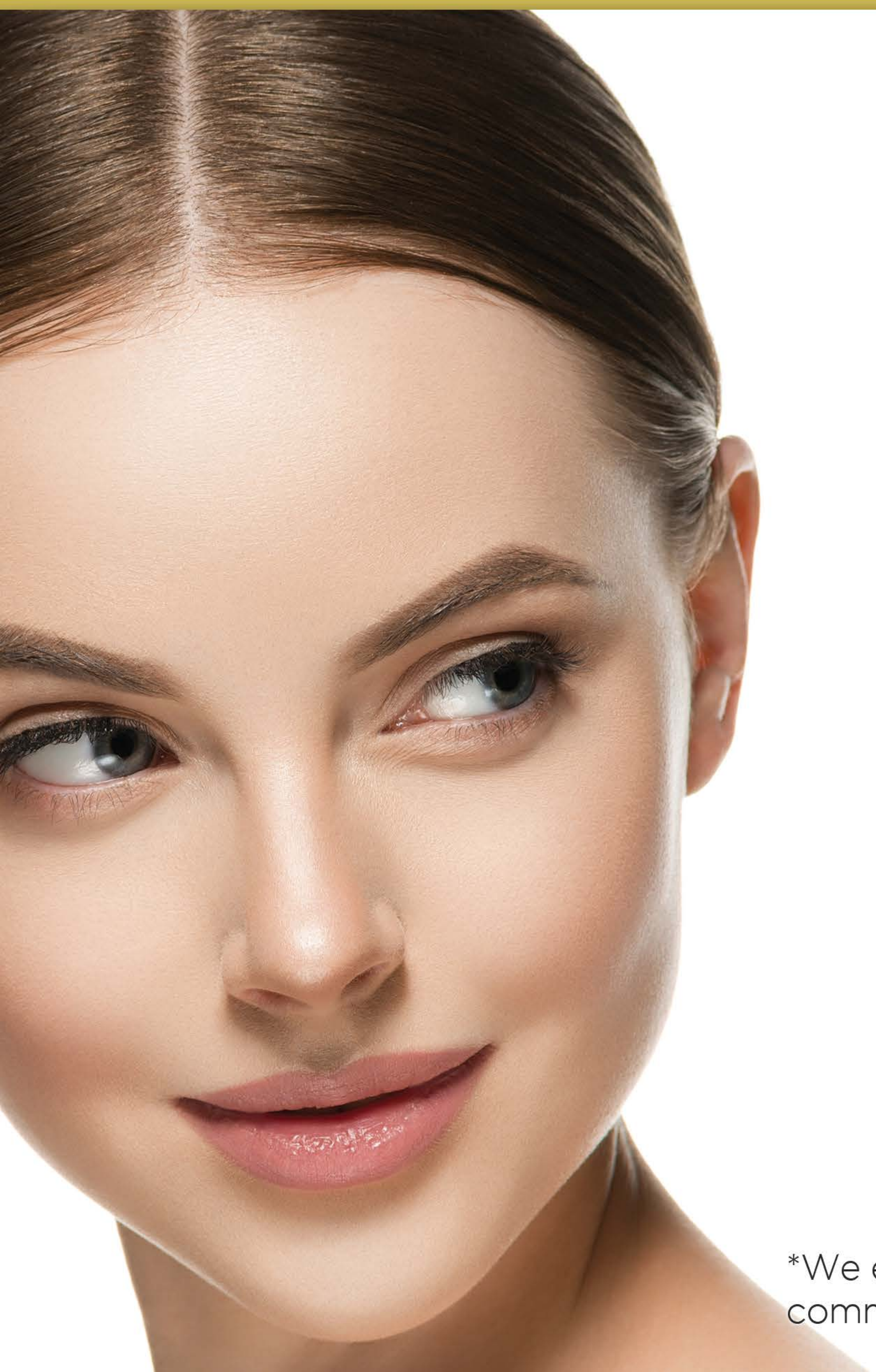




CANADA

REWARDS PLAN



Bella Grace is one of the first companies to integrate the best of the affiliate marketing model with the social media influencer world. Our innovative social-marketing business model rewards entrepreneurs with 11 different ways to earn money.

For Influencers, we offer long-term residual income without any startup fees or short-term contracts. We believe whenever your followers purchase products from Bella Grace, you should be paid. Regardless of how many people follow you, you can be a Bella Grace Influencer and receive up to 30% in Customer Commissions daily.

We'll provide you with a replicated website, real-time reports, access to world-class training tools and proprietary social marketing tools & content.

WANT TO MAKE MORE MONEY AND RECEIVE RESIDUAL INCOME WITHOUT ANY STARTUP FEES? JOIN US AS AN AMBASSADOR AND UNLOCK OUR FULL REWARDS PLAN.

You'll receive everything Influencers receive plus earn trips to amazing places, receive recognition for your achievements and learn leadership skills.

*We expect the typical participant to earn annually between \$0 and \$200 USD in commissions and bonuses, excluding retail profits.



Take a look at our Rewards Plan and see why we're attracting so many people who are looking for a side gig, a second revenue stream, or a full-time business

1. SUBSCRIBE & SAVE

Subscribe & Save is the easiest way to receive products monthly so that you never run out. All you have to do is select a date and we'll make sure your product is delivered to you every month. With Subscribe & Save, you will save 10% off your Subscribe & Save orders and can earn free products. Plus it's flexible, adjust or cancel any time.

2. U+3=FREE

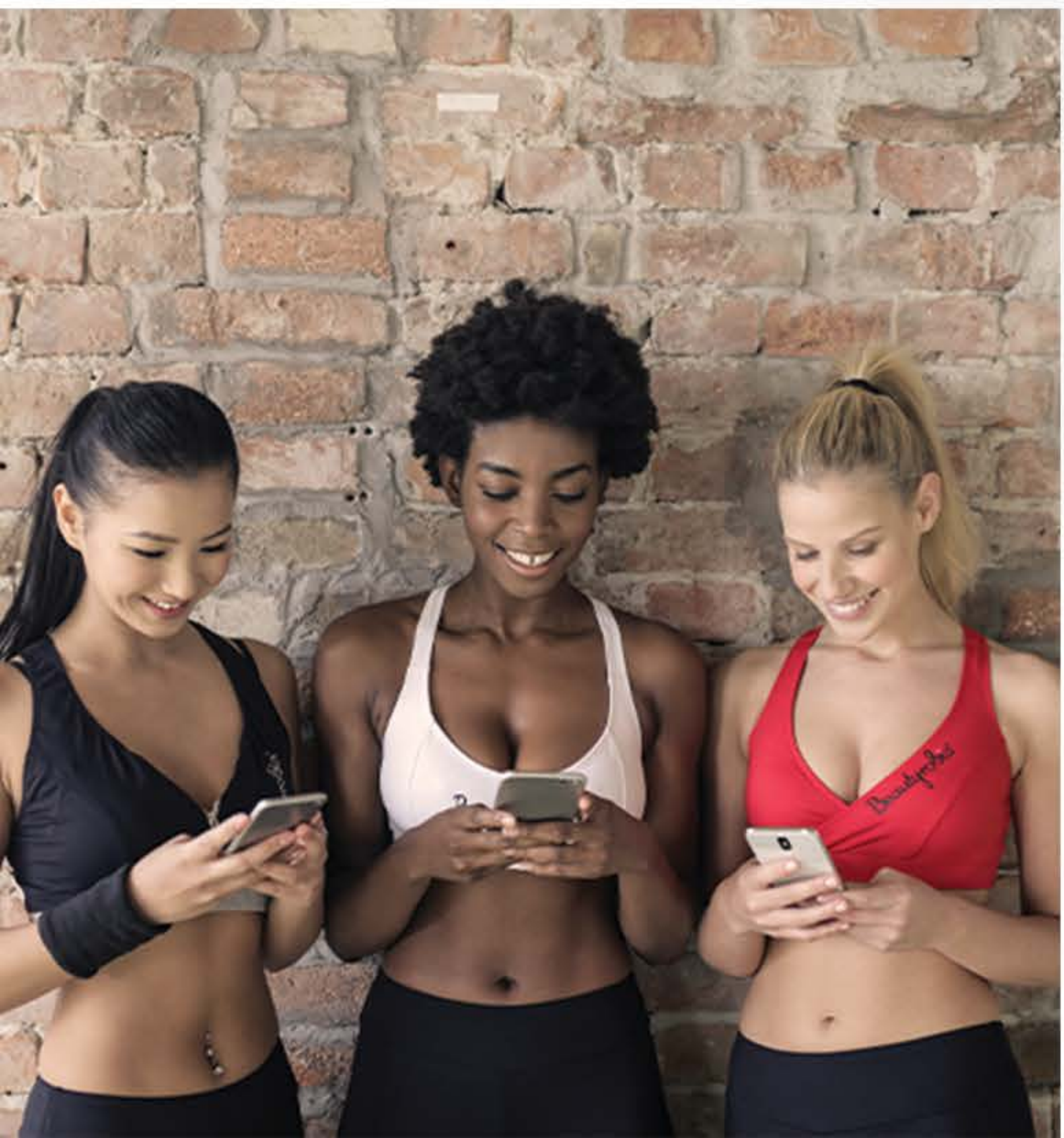
When you have a subscription and have 3 or more personally referred friends also on Subscription, your product subscription is free. All you pay for is shipping and tax. This program is available for All Ambassadors, Influencers, and Customers.

3. INFLUENCER REWARDS PLAN

Earn daily Customer Commissions up to 30% on every Customer purchase. See more details below in the Customer Commissions section.

4. AMBASSADOR REWARDS PLAN

Active Ambassadors can earn daily, weekly, monthly, and quarterly commissions and bonuses. Plus there are no personal monthly purchase requirements to qualify for these commissions



PAID DAILY

- Customer Commissions
- Builder Bonus

PAID WEEKLY

- Personal Sponsoring Bonus
- 90-Day Sprint Bonus

PAID MONTHLY

- Unilevel Team Commissions
- Universal Matching Bonus
- Rank Up Bonus
- Lifestyle Bonus
- Generational Depth Bonus

PAID QUARTERLY

- Leadership Bonus Pool
- Diamond Bonus Pool

CUSTOMER COMMISSIONS

When customers purchase products from your Bella Grace website, you will earn up to 30% on every Customer purchase daily. The percentage you earn is based on your previous month's total Customer sales.

The percentage you earn is based on your previous month's total Customers' purchases, both retail orders and Subscribe & Save orders. New Ambassadors and Influencers will earn 10% Customer Commissions on their Customers' purchases the month they enroll. The percentage they earn the following month will be based on their Customers' total purchases during their enrollment month.

Earn up to 30% on Customer sales purchased online for the retail price and up to 20% on Customer Subscribe & Save orders.

Example: In August, if your customers' orders totalled \$530 USD, you will receive 20% on all your retail sales and 15% on Subscribe & Save orders in September.

CUSTOMER SALES	RETAIL ORDERS	SUBSCRIBE & SAVE ORDERS
Up to \$499 USD	10%	10%
\$500 - \$999 USD	20%	15%
\$1,000 USD+	30%	20%

PERSONAL SPONSORING BONUS PAID WEEKLY

When your personally sponsored Influencers order product, and when your personally sponsored Ambassadors purchase product for resale, you earn 10%. The 10% is paid on the purchase price. The Personal Sponsoring Bonus is not paid on product packs.

Example: If Tom and Linda, each personally sponsored Ambassadors, purchase a Skincare Regimen on Subscribe & Save for \$160 USD and Sheri purchases a Skincare Regimen open stock for \$170 USD, you will receive a Personal Sponsor Bonus of \$49 USD.

$$\begin{aligned}
 & \$160 \text{ USD} + \$160 \text{ USD} + \$170 \text{ USD} = \$490 \text{ USD} \\
 & \$490 \text{ USD} \times 10\% = \$49 \text{ USD}
 \end{aligned}$$

NOTE: We expect the typical participant to earn annually between \$0 and \$200 USD in commissions and bonuses, excluding retail profits.

BUILDER BONUS

PAID DAILY

Active Ambassadors receive a Builder Bonus every time a personally sponsored Ambassador or Influencer purchases and resells a Product Pack. The Builder Bonus varies by pack and can change at any time without advanced notice.

There is no limit to how many product packs can be purchased for resale by Ambassadors and Influencers and they can be purchased at any time. For Ambassadors, 30% of Product Pack GV will be added to the Unilevel Team Commissions.



90-DAY SPRINT BONUS

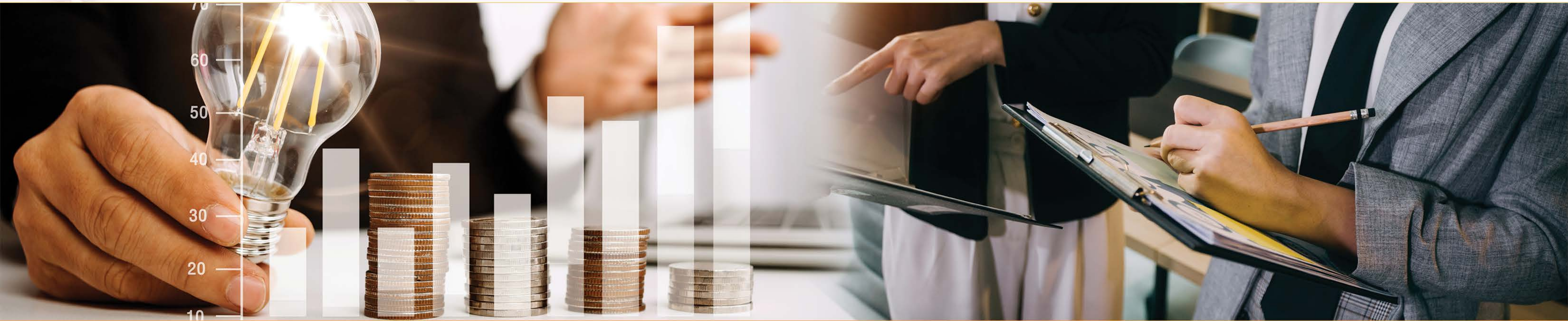
PAID WEEKLY

The 90-Day Sprint Bonus rewards active Ambassadors for building their businesses as quickly as possible during their first 90 days. New Ambassadors can earn up to \$8,000 USD in bonuses during their first 90-Days. When the combined GV from your personally sponsored customers, Influencers and Ambassador and the GV from their personally referred or sponsored reach 1,000 GV, you'll earn \$200 USD. Reach the next GV milestone and you'll earn even more! Your personal orders up to 500 GV count.

1,000 GV = \$200 USD Bonus (\$500 USD if within 15 days of enrollment)
1,600 GV = \$400 USD Bonus
2,500 GV = \$600 USD Bonus
4,000 GV = \$800 USD Bonus

7,000 GV = \$1,000 USD Bonus
10,000 GV = \$1,300 USD Bonus
15,000 GV = \$1,700 USD Bonus
20,000 GV = \$2,000 USD Bonus

NOTE: We expect the typical participant to earn annually between \$0 and \$200 USD in commissions and bonuses, excluding retail profits.



To reach each of the GV milestones, only 60% of the GV requirement can come from any one leg. For example, if you enrolled two new Ambassadors, Lisa and Jennifer, the maximum GV that would count from either Lisa or Jennifer is the following:

1,000 GV	Max 600 GV can come from any one leg
1,600 GV	Max 960 GV can come from any one leg
2,500 GV	Max 1,500 GV can come from any one leg
4,000 GV	Max 2,400 GV can come from any one leg
7,000 GV	Max 4,200 GV can come from any one leg
10,000 GV	Max 6,000 GV can come from any one leg
15,000 GV	Max 9,000 GV can come from any one leg
20,000 GV	Max 12,000 GV can come from any one leg

UNILEVEL TEAM COMMISSIONS PAID MONTHLY

Active Ambassadors with the paid-as rank of Silver and above can earn up to 12% Unilevel Team Commissions. The percentage and depth you earn depends on your paid-as rank for that month. The Unilevel Team Commissions pays on the GV from Customers, Influencers, and Ambassadors sales except for product packs. 30% of the GV from product pack sales are added to your Unilevel Team Commissions.

If the sponsor is not active, or the Ambassador is not a Silver, the next active paid-as Silver in the enrollment tree will receive the Unilevel Team Commissions.

UNIVERSAL MATCHING BONUS

PAID MONTHLY

The Universal Matching Bonus rewards you for building your business and for helping your team sell products. When your personally sponsored Ambassadors earn a Builder Bonus or a Unilevel Team Commission, you will earn a Universal Matching Bonus on whatever they earn up to six levels in your enrollment tree.

RANK	LVL 1	LVL 2	LVL 3	LVL 4	LVL 5	LVL 6
Platinum	10%	5%				
Sapphire	10%	5%				
Pearl	10%	5%	5%			
Emerald	10%	5%	5%			
Ruby	10%	10%	5%	5%		
Diamond	20%	10%	5%	5%		
Double Diamond	20%	10%	5%	5%	5%	
Triple Diamond	20%	10%	5%	5%	5%	
Crown Diamond	30%	15%	5%	5%	5%	5%
Grace Diamond	30%	15%	5%	5%	5%	5%

RANK UP BONUS PAID MONTHLY

As you begin to achieve the monthly rank requirements, your earning potential increases and takes effect the same month you achieve a new rank. 500 PV per month will count towards your rank qualification following the 60% max leg rule for any rank. For Gold and higher, only 60% of the GV requirement can come from one leg.

The Rank Up Bonus rewards active Ambassadors for achieving and maintaining a new rank beginning with Gold. New Gold through Pearl, will receive a Rank Up Bonus the month they achieve it. Ambassadors who achieve Platinum or Sapphire within the first 30 days of enrollment, will earn a higher Rank Up Bonus. Platinum will earn \$500 USD and Sapphire \$1,000 USD. Ambassadors who achieve Pearl within 60 days of enrollment will earn a \$2,000 USD Rank Up Bonus.

Emerald and higher will receive their Rank Up Bonus in equal installments. Each month the new rank is maintained, an installment will be paid until the Bonus has been paid in its entirety for any given rank.

Example: If you achieve Emerald in January, you will receive your first \$500 USD Rank Up Bonus on January's commission payment. Your next three \$500 USD amounts will be paid the months you meet the Emerald requirements. If you achieve Emerald in February, April, and May you will receive \$500 USD each of those months.

The Rank Up Bonus is stackable, meaning in January if you're a new Emerald and in February you achieve Ruby, you will receive both Rank Up Bonus installments every month that you achieve the rank requirements until the bonuses for the corresponding ranks are paid in full.

NOTE: We expect the typical participant to earn annually between \$0 and \$200 USD in commissions and bonuses, excluding retail profits.



Example: In January you're a new Emerald and by the end of February you meet the Ruby requirements. You will receive a \$500 USD Rank Up Bonus for achieving the Emerald plus a \$625 USD Rank Up Bonus for achieving Ruby. In total you'll receive \$1,125 USD in Rank Up Bonuses.

RANK	GV (Placement Tree)	LEG REQUIREMENT (Placement Tree)	RANK UP BONUS	MONTHS PAID
Ambassador				
Bronze	200			
Silver	500			
Gold	1,500	60% leg max	\$100 USD	1
Platinum	2,500	60% leg max	\$150 USD ((\$500 USD if within 30 days of enrollment)	1
Sapphire	6,000	60% leg max	\$250 USD (\$1,000 USD if within 30 days of enrollment)	1
Pearl	12,500	60% leg max	\$500 USD (\$2,000 USD if within 60 days of enrollment)	1
Emerald	25,000	60% leg max	\$2,000 USD	4
Ruby	50,000	60% leg max	\$5,000 USD	8
Diamond	100,000	60% leg max	\$10,000 USD	12
Double Diamond	200,000	60% leg max - 1 Diamond leg	\$20,000 USD	16
Triple Diamond	400,000	60% leg max - 2 Diamonds legs	\$40,000 USD	20
Crown Diamond	600,000	60% leg max - 3 Diamond legs	\$60,000 USD	24
Grace Diamond	1,200,000	60% leg max - 4 Diamond legs	\$120,000 USD	24

Bella Grace realizes life happens and it's not always possible to achieve your new rank in consecutive months. We do not require that these months be consecutive to receive your full Rank Up Bonus. Each month you achieve your new rank again, you'll be paid the bonus until the full Rank Up Bonus for that rank is paid.

NOTE: We expect the typical participant to earn annually between \$0 and \$200 USD in commissions and bonuses, excluding retail profits.

LIFESTYLE BONUS

PAID MONTHLY

Leadership is a key component to a thriving business. The Lifestyle Bonus rewards active Ambassadors who achieve the rank Sapphire and above the second month they maintain the new rank. Sapphires receive a \$250 USD Lifestyle Bonus and continue to receive it each month they maintain their rank. Pearls and above receive an additional \$250 USD, a total of \$500 USD every month the rank is maintained.

GENERATIONAL DEPTH BONUS

PAID MONTHLY

The Generational Depth Bonus pays active Double Diamond and above 3% on volume generated from all sales in their enrollment tree up to three Diamond levels.

Your first generation is all of your Ambassadors down to your first Diamond on any given leg. Generation 2 are all the Ambassadors below your first Diamond down to the next Diamond in any given leg.

	Generation 1	Generation 2	Generation 3
Double Diamond	3%		
Triple Diamond	3%	3%	
Crown Diamond	3%	3%	3%
Grace Diamond	3%	3%	3%

BONUS POOLS

Every sale from Customers, Influencers and Ambassadors contributes to our growth. The Bonus Pools provide a way for active Ambassadors to earn shares of Bella Grace's total sales.

LEADERSHIP BONUS POOL PAID QUARTERLY

2% of the total global GV in a quarter is put into a Leadership Bonus Pool. Active Emerald through Double Diamond earn shares based on their rank. Shares are earned each month you achieve Emerald through Double Diamond and are paid quarterly. Bonus Shares can be earned for every personally sponsored Sapphire or higher. You must qualify every month in a quarter to participate in the Leadership Bonus Pool

EXAMPLE: Julie is an Ambassador who is an Emerald. During the quarter, she advances to Ruby. In the example below, Julie will earn 5 shares plus any Bonus Shares she qualifies for during the quarter.

Month	Rank	Shares Earned
January	Emerald	1
February	Ruby	2
March	Ruby	2

PAID-AS RANK	NUMBER OF SHARES	BONUS SHARES
Emerald	1	+1 for every personally sponsored Sapphire or above
Ruby	2	+1 for every personally sponsored Sapphire or above
Diamond	3	+1 for every personally sponsored Sapphire or above
Double Diamond	4	+1 for every personally sponsored Sapphire or above

To earn the Leadership Bonus Pool, you must qualify every month in a quarter to participate. Points are earned each month based on your paid-as rank.

DIAMOND BONUS POOL

PAID QUARTERLY

1% of the total global GV in a quarter is put into a Diamond Bonus Pool. Active Triple Diamond, Crown Diamond and Grace Diamond earn shares based on their rank. Shares are earned each month you achieve Triple Diamond, Crown Diamond and Grace Diamond and are paid quarterly. To earn the Diamond Bonus Pool, you must qualify every month in a quarter to participate. Points are earned each based on your paid-as rank.

Bonus Shares can be earned for every personally sponsored Ruby and Diamond. The number of Bonus Shares rewarded for personally sponsored Diamonds is based on your rank.

PAID-AS RANK	NUMBER OF SHARES	BONUS SHARES
Triple Diamond	1	+1 for every personally sponsored Sapphire or above +2 for every personally sponsored Ruby or above
Crown Diamond	1	+1 for every personally sponsored Sapphire or above +4 for every personally sponsored Ruby or above
Grace Diamond	1	+1 for every personally sponsored Sapphire or above +6 for every personally sponsored Ruby or above

WHEN ARE COMMISSIONS PAID?

Daily Pay: A daily period starts each day at 12:00 AM Pacific Time and ends the same day at 11:59 PM Pacific Time. Daily pay commissions are paid the following day after the previous day ends. For example, if a customer makes a purchase on Monday at 11:00 pm PT, commissions will be paid on Tuesday.

Weekly Period: A weekly period starts Monday at 12:00 AM Pacific Time and ends Sunday at 11:59 PM Pacific Time. Weekly commissions are paid on Mondays, a week after the period ends.

Monthly Period: A monthly period begins on the first calendar day of a month at 12:00 AM Pacific Time and ends the last calendar day of that same month at 11:59 PM Pacific Time. Monthly commissions are paid on or before the 15th of the following month.

Quarterly Period: A quarterly period runs 3 full calendar months. The quarters are January through March, April through May, July through September, and October through December. Quarterly bonuses are paid on the next monthly cheque.



QUALIFYING FOR COMMISSIONS

DAILY AND WEEKLY COMMISSIONS

To earn daily and weekly commissions you must meet **one** of the following:

- Generate 60 PV in sales by personally purchasing and reselling product
- 120 GV in Customer purchases
- Personally be U+3 = FREE Qualified

When you meet one of the requirements above you will be considered active for that commissionable week and are eligible to earn daily and weekly commissions for that month and the following month. Bella Grace’s commissionable week starts Monday at 12:00 AM Pacific Time and ends Sunday at 11:59 PM Pacific Time

For example: If a customer places an order on March 16th, as long as you are active by March 22nd, you’ll receive daily and weekly commissions for the rest of March and the entire month of April.

If you are not active in April, you will not receive daily and weekly commissions in May until you are active. Once you are active in May, you will start earning daily and weekly commissions for that commissionable week plus the rest of May and June.

MARCH

S	M	T	W	T	F	S
1	2	3	4	5	6	7
8	9	10	11	12	13	14
15	16	17	18	19	20	21
22	23	24	25	26	27	28
29	30	31				

APRIL

S	M	T	W	T	F	S
			1	2	3	4
5	6	7	8	9	10	11
12	13	14	15	16	17	18
19	20	21	22	23	24	25
26	27	29	30	31		

MONTHLY COMMISSIONS

To earn monthly commissions you must meet one of the following requirements any time during the calendar month to be considered active for that current month and the following month:

- Generate 60 PV in sales by personally purchasing and reselling product
- 120 GV in Customer purchases
- Personally be U+3 = FREE Qualified

QUARTERLY COMMISSIONS

Leadership Bonus Pool and Diamond Bonus Pool

To earn the Leadership Bonus Pool and Diamond Bonus Pool you must meet the paid-as rank requirement plus be active every month of the quarter.



TERMS & DEFINITIONS

Active: An Ambassador is an independent business owner who completes an Ambassador Agreement, and earns income by building a team. To earn commissions you must be **Active**. Refer to pages 15 and 16 to see how to become Active.

Compression: Compression occurs when an Ambassador does not meet the requirements to receive a bonus. The next active Ambassador who does meet the requirements receives the Bonus. Compression is applicable to the Builder Bonus and the Unilevel Team Commissions.

Customer: A Customer is a person who purchases products only, and has the ability to refer to other Customers, Ambassadors or Influencers. A Customer can upgrade to an Influencer or Ambassador.

Enrolling Sponsor: Your enrolling sponsor is the Ambassador who enrolled you.

Enrollment Tree: Your enrollment tree is the people you personally sponsor and the people they sponsor, etc.

Generation: A generation is all of the Ambassadors down to your first Diamond in any given leg. That Diamond and all the Ambassadors down to the next Diamond are on your second generation.

Group Volume (GV): Refers to the value associated with a product. Your commissions, bonuses, pools, and rank are based on your GV.

Influencer: An Influencer is a person who shares Bella Grace and earns commissions on their customer sales. Influencers can earn up to 30% in Customer Commissions. A Customer can upgrade to Influencer for free.

Level: The Ambassadors you personally sponsor are on your first level. The Ambassadors they sponsor are on your second level, etc.

Paid-As Rank: Your paid-as rank is based on meeting the qualifications for each rank during a monthly commission period. Your paid-as rank may fluctuate month to month based on meeting the rank requirements.

Personal Volume (PV): Volume generated from product you personally purchase for resale is called PV.

Placement Tree: You can place your personally sponsored Ambassadors or Influencers anywhere within your team. The placed Ambassador or Influencer will be part of the placement tree for both the enroller and the Ambassador who they were placed under.

U+3 = FREE Qualified: When three of your friends have a Subscribe & Save order, you can receive products for free when you have a Subscribe & Save order too. All you pay for is shipping, handling and tax